



Smart Mesh Wi-Fi

go further

Wi-Fi Enhanced Everywhere





Altice Labs Smart Mesh Wi-Fi

based on Wi-Fi EasyMesh™
from Wi-Fi Alliance®

The Altice Labs Smart Mesh Wi-Fi is a certified solution that creates a clear and powerful Wi-Fi signal for any and all environments, in interior coverage scenarios.

The solution incorporates the Hardware (Fiber Gateway and Smart Mesh Wi-Fi AP extenders), a Mobile app (Android & iOS) and a Cloud (web-portal) that unifies, configures, manages and reports the Wi-Fi Mesh Ecosystem.

**Both Fiber Gateways and Smart Mesh Wi-Fi APs will run a local software (local controller, local agent and a Smart Mesh Wi-Fi management agent) supported on high performance state-of-the-art Wi-Fi interfacing.*

Our solution



Hardware



Web-Cloud



Mobile app

What is Mesh

The Smart Mesh Wi-Fi uses multiple access points (APs), which work together, to ensure that all areas of the house have strong, efficient and wide Wi-Fi coverage.

The EasyMesh™ Wi-Fi is a smart, easy-to-use and self-adapting solution, which enables consistent service and superior quality of user experience.

Features

- **Unified Smart Wi-Fi Network**
- **Reduced client roaming and association failures**
- **Both wireless and wired connections (Ethernet) can be used to establish network backhaul.** *(Fiber Gateway acts as master)*
- **Interoperable mesh solution compliant with Wi-Fi Alliance Multi-AP specification**
- **Patented enhanced steering and traffic load balance**

Wi-Fi Enhanced Everywhere



Smart Mesh Wi-Fi
Ensures optimal coverage
and consistent performance
@ home environment

Who can benefit from it?



Network
Operators



Engineering
Teams



End Customer
(Home)



End Customer
(Commercial)

The Hardware .

D2150G & D2260G

Extenders



High performance HW solution based on the new IEEE 802.11ax standard.

Specifications	D2150G	D2260G
Dual band concurrent 2x2 (2.4GHz) + 4x4 (5GHz)	•	•
Max EIRP 2,4 GHz up to +20dBm	•	•
Max EIRP 5GHz up to +30dBm	•	•
Remote cloud management	•	•
IEEE 802.11a/b/g/n/ac	•	•
IEEE 802.11a/b/g/n/ac/ax		•
IEEE 802.11k/v/r	•	•
WPS/Soft WPS	•	•
IPTV support (QoS, IGMP)	•	•
Remote FW upgrade	•	•
ETH ports	2	2
Easy mesh compliance, MAP spec	•	•

Customer .



Mobile app

Android and IOS app for monitoring and managing the network



User Cloud

Remote cloud for Network configuration, supervision and troubleshooting



Self-Care

Integration with self-care apps (Allows the configuration, troubleshooting & management of Wi-Fi service)

Operator .



Performance & Statistics

Rich dashboarding to explore Wi-Fi indicators (KPI management, Network topology, reports, etc...)



Diagnostics

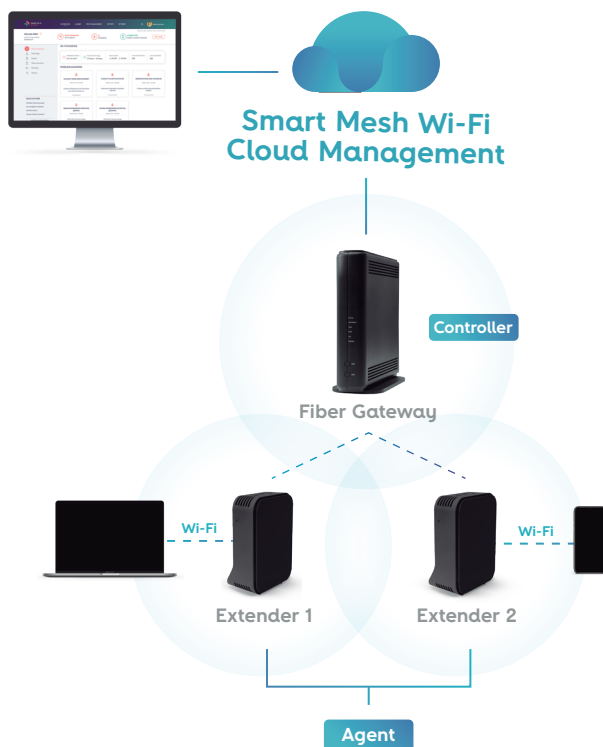
Real-time monitoring and management of Wi-Fi settings and troubleshooting on the app



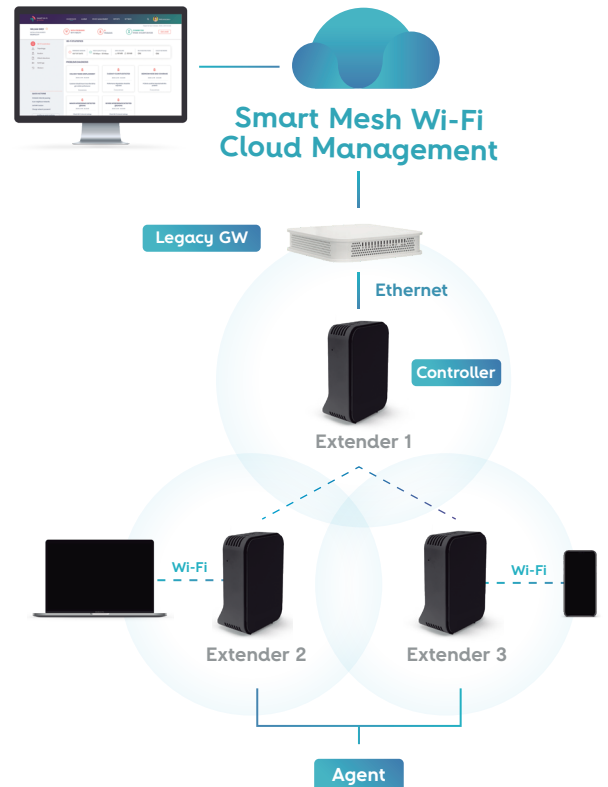
Device Management

Remote Firmware upgrades, inventory, troubleshooting & management of devices and Networks, individually or in bulk

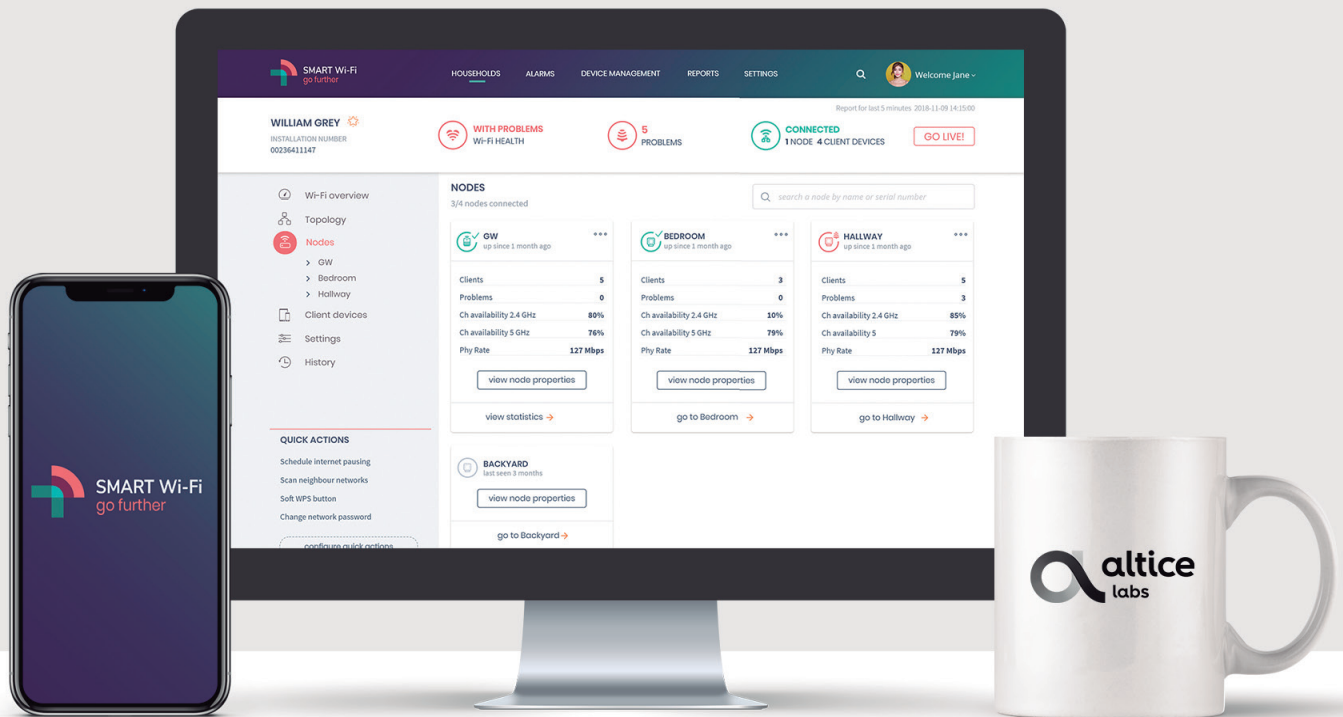
Typical / Standard Scenario



Standalone Scenario



Smart Mesh Wi-Fi Cloud Management .



Easy & Smart

Fast and stable connection
in all your house

Smart Mesh Wi-Fi Management
takes care of everything so you can
enjoy fast and flawless internet



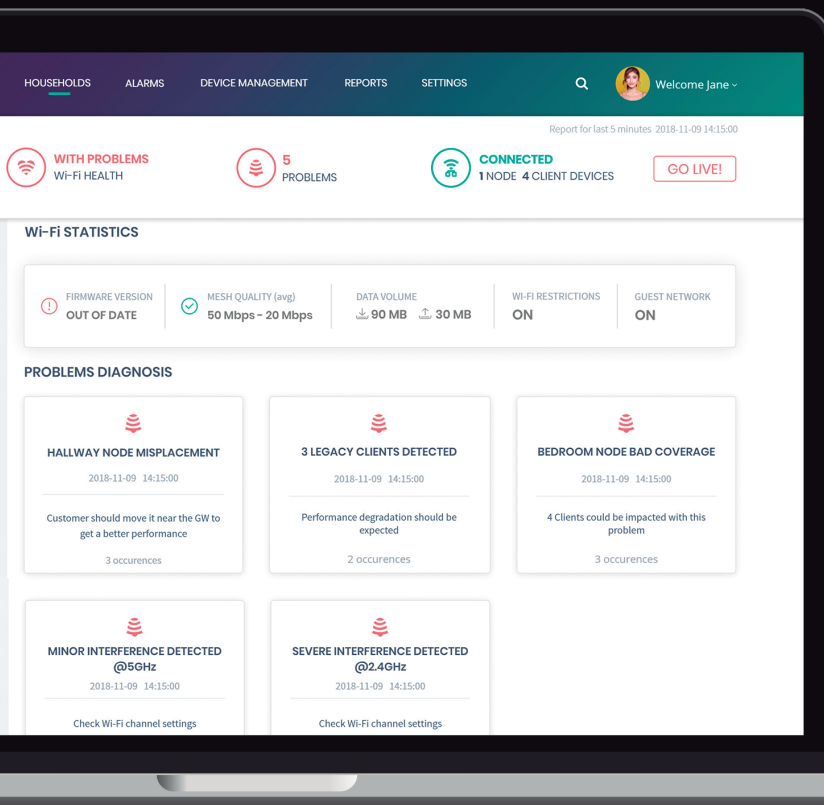
Web Cloud



Mobile app



The Cloud .



Web Cloud

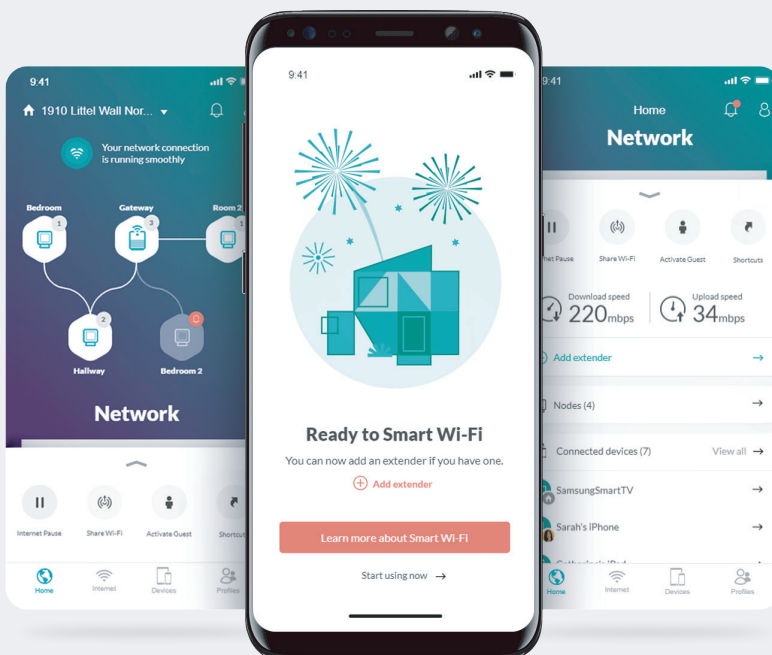
Remote control of all Network devices

Monitors, diagnoses and optimizes Mesh Wi-Fi

Provide intelligence to Mesh Wi-Fi from analytics

Extensible to provide full visibility for Home Networks & CPEs

Smart Mesh Wi-Fi app .



Effortlessly control your network & customize your settings



Easy Setup



Wider Network



Network Overview



Full Autonomy



Share Wi-Fi



Guest Network



Device Management



Parental Control



About Altice Labs

Delivering key telecommunications technologies since 1950, Altice Labs has been shaping the future of technology, enabling Communications Service Providers and Enterprises to offer advanced and differentiated services to their customers and users.

Altice Labs is an innovation and transformation catalyst supported on a strong and dynamic Innovation Ecosystem. Through technology, we are committed to improve people's lives and the way in which companies do business.



www.alticelabs.com